

TELScope: ORAL TELEHEALTH SYSTEM

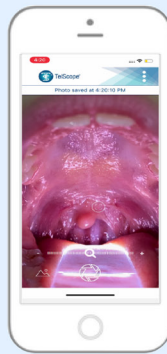
Patients & professionals can complete a high-quality **oral telehealth examination** easily and affordably with the **TelScope** product & app combination.



1. EXAMINE

Examine your patient with the TelScope illuminating depressor handle.

- **Single-handed oral examination** - replace the wooden tongue depressor & penlight
- **Hygienically secure**: depressors are single-use and individually-wrapped to **reduce risk of cross-contamination**
- **Improved accuracy in oral diagnoses**, as the light source is placed directly inside the mouth
- **Antimicrobial, rechargeable**, handle



2. CAPTURE

Capture a telehealth image with the TelScope app.

- TelScope handle attaches to **any smart device** to pair with the TelScope App
- Easily capture a **superior quality intra-oral image**
- **Measure, circle, and comment** on areas of concern in the mouth



ANDROID



iOS



3. CONNECT

Connect your intraoral image to a specialist with the TelScope device & app.

- **Securely connect image** with a specialist or store for **patient triage**

